

# Kingsgate

GREYMOOUTH



We would love to  
*see you here*  
2017 Conference Pack



# Welcome to Greymouth

Here the rugged and the beautiful combine to make the perfect conferencing destination. Visiting the wild and beautiful West Coast of the South Island is like stepping back to New Zealand the way it used to be - unspoilt landscape, a slower pace and a welcome that's genuinely warm and heartfelt.

The largest town on the West Coast, Greymouth is the turnaround point for the scenic TranzAlpine train, offers adventure activities, heritage attractions and guided nature tours. Delegates can get muddy on a quad bike tour, enjoy a scenic hike or end the day with a glass of the local brew, Monteith's beer.

## **Location**

Situated in the heart of the town, Kingsgate Hotel Greymouth is 300m from the TranzAlpine Railway Station and 35 minutes from the Hokitika Airport. Only a minutes walk from shops, cafes, bars and art galleries, the hotel is perfectly located for easy access to the West Coast's spectacular scenic attractions.





## The Hotel

Overlooking the Grey River, Kingsgate Hotel Greymouth enjoys a commanding location in the centre of town and prides itself on a warm friendly service. The reception, bar and restaurant areas form part of the original hotel built in 1906 and have a wonderful heritage feeling. This historic hotel is known for its modern facilities, fine dining, genial atmosphere and early 20th century New Zealand charm. Your delegates will love the experience of genuine warm hospitality and relaxed lifestyle that is the West Coast.

Kingsgate Hotel Greymouth is endorsed with a Qualmark 3 Plus Star and Enviro Bronze rating.

### **Guest Services**

- Jimmy Cooks Restaurant
- Albion Bar
- 24 hour room service
- Complimentary car parking
- Complimentary wireless internet access for all inhouse guests (500mb per day)
- Wireless internet available in the lobby and the majority of hotel rooms
- Broadband and wireless internet in conference rooms



# Accommodation

Kingsgate Hotel Greymouth provides ideal accommodation and facilities for leisure and corporate business alike. The hotel has a total of 98 rooms including 6 suites.

## Standard Room

Located on the ground and first floors. All standard rooms have access to a balcony or the hotel grounds and offer either a double bed or double and single bed configuration with an ensuite bathroom and a shower over a full size bath.

## Superior Room

Located in the tower, all superior rooms have access to a balcony, with those on the high floors having views either inland of the Grey Valley or to the coast over the Grey River. These rooms contain either two double beds or a double and single bed with an ensuite bathroom and walk in shower.

## Superior Plus Room

Located on the top floors of the tower, these rooms have magnificent views of the Grey River to the coast. At dusk you may catch a stunning West Coast sunset or on a clear day you can see Mount Cook to the south. These rooms have access to a balcony, contain a super king bed and ensuite bathroom with walk in shower.

## Suite

Offering a separate lounge and dining area with your own kitchenette, all suites have views down the Grey River to the coast. Suites have one super king bed and ensuite bathroom with walk in shower.

## All rooms feature

Satellite television, wifi internet access, clock radio, refrigerator, mini bar (on request), tea and coffee facilities, direct dial telephone, ironing facilities and hair dryer.

Check-in: 2.00pm

Check-out: 10.00am



## Conference Rooms

The conference rooms are located on the ground floor of the hotel providing easy access and making the venue ideal for training or seminars. Catering for up to 150 delegates, maximum flexibility is gained by being able to combine the rooms and tailor seating arrangements and presentation facilities.

### Thomas Edward Room

The larger of the two rooms at 94m<sup>2</sup>, the Thomas Edward Room caters for up to 80 theatre style or 60 banquet style. The room is ideal for seminars, training or product launches as it has clear sight lines from one end of the room to the other.

### Brian Boru Room

Situated right next door, the Brian Boru room is 44m<sup>2</sup> and ideal for small meetings, comfortably catering for up to 35 theatre style, 16 classroom style or alternatively utilised as a breakout room.

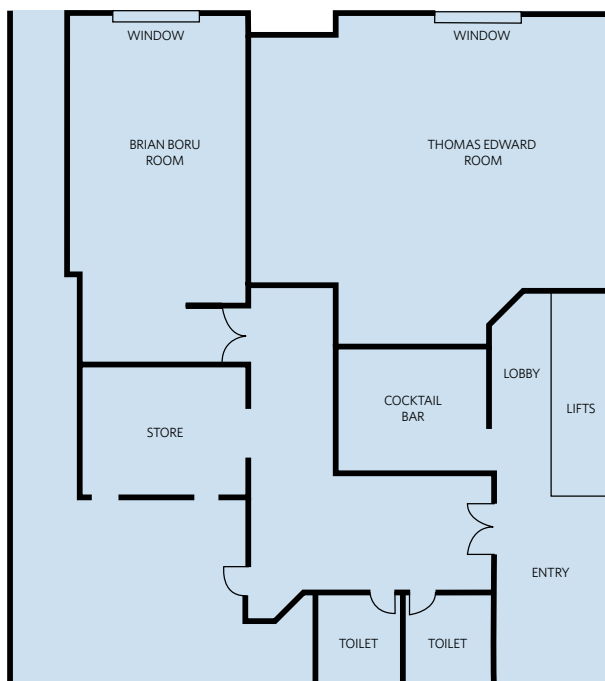
### Thomas Edward and Brian Boru Rooms Combined

These rooms have the ability to be combined into one large room of 138m<sup>2</sup>, perfect for larger events of up to 150 cocktail style or 90 banquet style.



# Capacities

Conference Room	Area Sqm	Ceiling Height							
Thomas Edward Room	94	2.50m	80	30	60	100	24	24	30
Brian Boru Room	44	2.50m	34	16	30	50	16	18	15
Thomas Edward and Brian Boru Rooms Combined	138	2.50m	130	50	90	150	30	40	50





# Conference Essentials

## Day Delegate Packages

**Full Day Delegate Package**  
 NZ\$47.00 per person per day includes:

- ..... Plenary venue hire
- ..... Morning tea
- ..... Buffet lunch
- ..... Afternoon tea
- ..... Projection screen
- ..... Whiteboard with markers
- ..... Flipchart with markers
- ..... Notepads, pens, iced water and mints

Delegate packages are available for booking of 18 delegates or more and are inclusive of 15% GST.

## Audio Visual Equipment

Equipment	Cost per day	Equipment	Cost per day
First whiteboard	Complimentary	Data projector	NZ\$150.00
Additional whiteboard	NZ\$35.00	Projection screen	Complimentary
Mini sound system for use with laptop	NZ\$50.00	Simple sound system with handheld microphone	NZ\$50.00
Additional paper	NZ\$10.00 per day	Flipchart	NZ\$25.00
TV/DVD	From NZ\$50.00	Lectern	Complimentary

*We work closely with a local audiovisual supplier and can arrange additional equipment based on your specific requirements.*

*Conference room wireless internet access for multiple users is available for 18 hours or 1GB, whichever comes first, at a rate of NZ\$40.00.*

*All the above pricing is inclusive of 15% GST unless otherwise stated.*



## Food & Beverage

### Catering

When planning your catering we offer several different solutions and can tailor menus to suit dietary requirements and your budget. Refreshments are served in the conference room or a breakout area can be arranged if preferred. Lunch breaks are served in Alberts Restaurant. Dinner themes are a great way to make a statement or create a memorable evening and our conference team can supply detailed menus and theme ideas.

<b>Arrival tea and coffee</b>	NZ\$ 3.50
<b>Morning or afternoon tea</b>	From NZ\$ 6.50
<b>Lunch</b>	From NZ\$15.00
<b>Canapés</b>	From NZ\$ 12.00
<b>Buffet dinners</b>	From NZ\$40.00
<b>Plated dinners</b>	From NZ\$45.00

All prices are per person and include 15% GST.

### Jimmy Cooks Restaurant

Jimmy Cooks Restaurant is open everyday for breakfast and dinner. Savour delicious á la carte cuisine and buffet dining, beautifully prepared and presented by friendly staff. Open daily from 6.00pm.

### Albion Bar

This splendid bar has been an icon in Greymouth since the mid 1800's, with photos of early Greymouth adorning the walls of this historic bar. Located in the original part of the hotel the décor has been maintained to capture this historical ambience. A welcoming retreat to relax at the end of a busy day conferencing or meet for that pre dinner drink. For those wishing to dine less formally our á la carte menu is available from 4.30pm daily.





## Activities & Attractions

From team building to partner and touring programs, we will create the ultimate experience for your group.

The West Coast is the birthplace of pounamu – the precious New Zealand greenstone or jade and can be found throughout the region. Our conference team can arrange for exclusive viewing to galleries and shops where your delegates can watch the carvers at work. Inspired by the West Coast gold rushes of the 1860s, discover Shantytown, a faithfully recreated 19th century pioneer town made up of over thirty historic buildings. Visit the Monteith's Brewing Company, the only brewery you'll find still gently steaming coal-fired boilers along with open fermenters that allow you to see and smell the beer as it slowly matures.

The West Coast is 70km at its widest point with beach and forest walks to suit all ages and abilities. Eco tourism experiences include: canoeing; kayaking; surfing; jet boating; jet skiing; mountain biking; horse treks; river and sea fishing; gold panning; or exploring the old gold and coal mines and ghost towns. Need we say more? The West Coast offers something for every delegate.



## For Assistance

### **Kingsgate Hotel Greymouth**

32 Mawhera Quay  
Greymouth, New Zealand 7805

Telephone: +64 3 768 5058

Email: [kingsgate.greymouth@millenniumhotels.com](mailto:kingsgate.greymouth@millenniumhotels.com)

### **Millennium Hotels and Resorts National New Zealand Sales Office**

National Conference Co-ordinator: Maxine Hale

Toll Free within New Zealand: 0800 4 MEETINGS (0800 4 633 846)

Telephone: +64 3 367 3302

Email: [meetings@millenniumhotels.com](mailto:meetings@millenniumhotels.com)

### **Millennium Hotels and Resorts National Australian Sales Office**

Conference and Incentives Business Development Manager: Tania Barnes

Telephone: +61 4 2117 3325

Email: [tania.barnes@millenniumhotels.com](mailto:tania.barnes@millenniumhotels.com)

**[www.meetingsnz.co.nz](http://www.meetingsnz.co.nz)**