



MILLENNIUM

TAUPŌ
MANUELS



MAN401 1023

Let's Meet *Together*
2023 Conference Pack



WELCOME TO TAUPŌ

Perfectly positioned on the shores of New Zealand's largest lake, in the centre of the North Island, Taupō is known for its water activities, lively centre and proximity to an abundance of natural attractions. Taupō boasts the largest freshwater lake in Australasia and its mountains are famous internationally for being featured as Mt Doom in the Lord of The Rings trilogy.

The relaxed year-round resort destination makes Taupō the ideal conferencing base offering boating, fishing, walking and skiing excursions. Daily flights into Taupō, make it easily accessible from all the major cities in New Zealand.

Location

4kms from Taupō Airport, this well appointed property is set directly on the shores of Lake Taupō enjoying uninterrupted views of the magnificent lake and mountains. Just minutes away from the township of Taupō and the many local attractions and activities the region has to offer, the hotel is the perfect place to be part of the action or simply relax.

The hotel is 91km from Rotorua Airport, approximately 1 hours drive with transport easily arranged.





The Hotel

Millennium Hotel and Resort Manuels Taupō is luxurious and so close to the lake's crystal clear waters you could almost flick a line from the doorstep and reel in a gleaming rainbow trout. Enjoy stunning views from one of the restaurants, sit at the lakefront bar and watch the beautiful sunsets or take a dip in the 'hot grotto' plunge pool. A flawless reputation for excellence in service and cuisine make this the favourite venue for many companies.

Millennium Hotel and Resort Manuels, Taupō is endorsed with a Qualmark 4 Plus Star and Enviro Bronze rating. This establishes the hotel as a premier environmentally aware accommodation provider in the region.

Guest Services

- Edgewater Restaurant
- Beach 243
- Lakefront Lounge Bar
- 7am-9pm room service
- Complimentary WiFi throughout the hotel
- Jetty
- Heated outdoor swimming pool
- Grotto plunge pool
- Gymnasium
- Tennis Court
- Complimentary guest car parking
- Guest laundry
- Business centre
- Photocopy and secretarial services





Function Rooms

The same elegance and sophistication that features throughout the hotel continues into the conference areas. With space for up to 190 delegates, this is the ideal venue for retreats, product launches, meetings, cocktail parties, training seminars, formal dinners or wedding receptions.

Regency Room 1

The largest of our three conference rooms, Regency 1 seats up to 100 with a floor space of 130sqm. Located on the first floor and overlooking Lake Taupō, this room offers plenty of natural light, fresh air and individual air conditioning. Can be combined with Regency Room 2 to create a 250sqm space on split levels for larger meetings.

Regency Room 2

With a floor space of 120sqm, Regency 2 is suitable for meetings between 15-30 in classroom style with the flexibility of seating up to 40 theatre style. Offering plenty of natural light, fresh air and individual air conditioning, this room is located on the first floor overlooking Taupō's residential area. Can be combined with Regency Room 1 to create a 250sqm space on split levels for larger meetings.







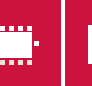
Boardroom

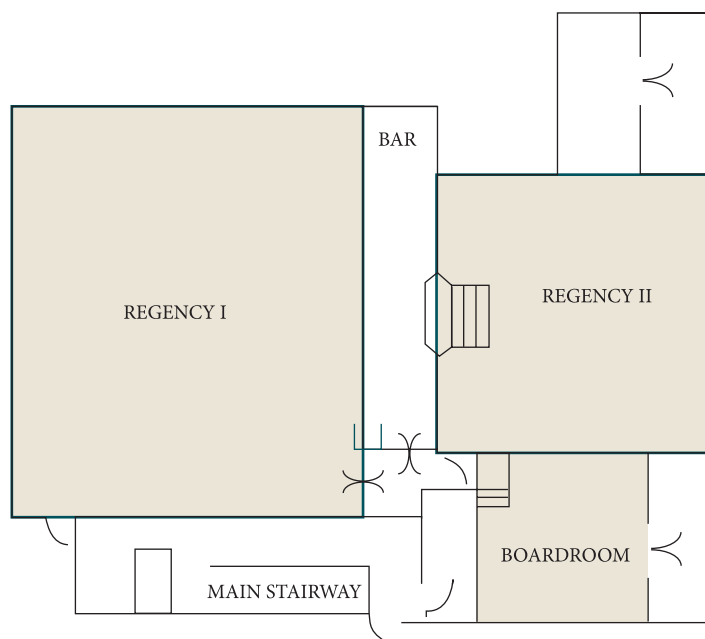
Our intimate purpose built boardroom caters for up to 10 delegates and is an ideal space for one on one interviews or an executive meeting. Located on the first floor overlooking Taupō's residential area this room enjoys natural light, fresh air and individually controlled air-conditioning.





Capacities

Capacities	Area Sqm	Ceiling Height							
Regency 1	130	2.40m	70	80	80	120	40	30	80
Regency 2	80	2.00m	40	40	40	60	25	18	36
Regency Rooms Combined	210	2.00-2.40m	100	100	100	120	-	-	100
Boardroom	26	2.00m	10	-	-	-	8	10	-





Event Essentials

Day Delegate Packages

Full Day Delegate Package
NZ\$75.00 per person per day includes:

- Plenary venue hire
- Morning tea
- Buffet lunch
- Afternoon tea
- Projection screen
- Electronic whiteboard with markers
- Notepads, pens, iced water and mints

Delegate packages are available for booking of 20 delegates or more and are inclusive of 15% GST.

Audio Visual Equipment

Equipment	Cost per day	Equipment	Cost per day
First whiteboard	Complimentary	Data projector	NZ\$180.00
First flipchart	Complimentary	Inhouse sound system	From NZ\$55.00
Flipcharts	NZ\$12.00	Projection screen	Complimentary
Handheld or lapel microphone	NZ\$55.00		

We work closely with a local audiovisual supplier and can arrange additional equipment based on your specific requirements.

Complimentary wifi is available in the conference room.

All the above pricing is inclusive of 15% GST unless otherwise stated.



Food & Beverage

Catering

When planning your catering we offer several different solutions and can tailor menus to suit dietary requirements and your budget. Refreshments are served in either the conference room or one of five separate breakout rooms. Dinner themes are a great way to make a statement or create a memorable evening and our conference team can supply detailed menus and theme ideas.

Arrival tea and coffee	NZ\$ 5.00
Morning or afternoon tea	From NZ\$ 12.00
Lunch	From NZ\$ 35.00
Canapés	From NZ\$ 20.00
Buffet dinners	From NZ\$ 70.00
Plated dinners	From NZ\$ 65.00

All prices are per person and include 15% GST.

Edgewater Restaurant

The Edgewater has earned its well deserved reputation as one of the region's favourite restaurants. Enjoy fresh gourmet cuisine, a truly excellent wine list and amazing views in an elegant ambience, the ultimate in luxury. Perfect for that special dining experience, themed dinner or to celebrate a product launch.

Beach 243

The Beach 243 is as it's name suggests, a superbly located spot and true lake edge dining experience. A popular meeting place for breakfast, lunch, morning or afternoon teas. Beach 243 boasts a selection of small and larger plates served in a casual setting right on the beach. With Seating for up to 40 people, Beach 243 is the ideal place to host your dining functions.

Lakefront Lounge Bar

At the luxurious Lakefront Lounge Bar, the views of the sun gently going down are almost as relaxing as slowly sipping one of our specialty cocktails. From welcoming surroundings to the alfresco style patio, enjoy striking views out over Lake Taupō to Acacia Bay.





Accommodation

Choose from lakefront rooms with private balconies or beach access to spacious studios that open out to the heated swimming pool, or a luxurious suite overlooking the water. The hotel offers 51 rooms including 6 standard rooms with a pool view, 12 standard lakeview rooms, 13 superior rooms, 8 superior plus rooms and 12 junior suites. Lakeview rooms enjoy magnificent views of the lake, town and mountains.

Standard Room

Comfortable studio style rooms contain either a queen or king bed and ensuite with shower. Standard rooms enjoy either a pool or garden view.

Standard Lakeview Room

Intimate studios featuring one queen bed and absolute lakefront position with either a patio or a balcony overlooking the lake.

Superior Room

Recently refurbished superior rooms feature two double beds. All rooms face the lakefront.

Superior Plus Room

These large spacious rooms either open to the Mediterranean styled pool area or onto the shores of Lake Taupo. Superior plus rooms contain one king zipped bed and ensuite with large corner spa bath and shower.

Junior Suite

All have magnificent views of the lake, mountains and town. Junior Queen Suites have a separate lounge area to the bedroom and offers either a large feature monsoon shower for two or spa bath and shower. Junior King Suites are spacious studio style rooms with a large Californian King bed and spa bath.

All rooms feature

Individual air-conditioning, flat screen television with Sky Guest Select 50+ channels, wifi, stereo system, clock radio, desk, refrigerator, mini bar, tea and coffee facilities, direct dial telephone, ironing facilities and salon style hair dryer.

Check-in: 3.00pm

Check-out: 10.00am





Activities & Attractions

Surrounded by majestic volcanoes, bush clad mountains and spectacular landscapes, Lake Taupō makes for an ideal conferencing destination. An adventure lovers' playground there is every kind of adrenaline pumping activity you can imagine. Thrill your delegates with jet boating, sky-diving, motor-racing and bungy jumping. If relaxation and leisure is more your conference style, there are lakeside walks, boutique shopping, soaking in hot pools and pampering thermal beauty treatments. Marvel at Huka Falls, the most visited natural feature in New Zealand, experience the best trout fishing in the world, enjoy scenic cruises, kayaking, sailing and summer time swimming.

Our conference and incentive team are here to provide you with the inspiration and tools to make you a star and your event a resounding success.





Contact Us

Millennium Hotel and Resort Manuels, Taupō

243 Lake Terrace

Taupō, New Zealand 3330

Conference and Events Manager: Melissa Savage

Telephone: +64 7 376 1693

Email: conference@manuel.co.nz

Website: manuel.co.nz

Millennium Hotels and Resorts National Conference Office

Toll Free within New Zealand: 0800 4 MEETINGS (0800 4 633 846)

Telephone: +64 3 367 3302

Email: meetings@millenniumhotels.co.nz



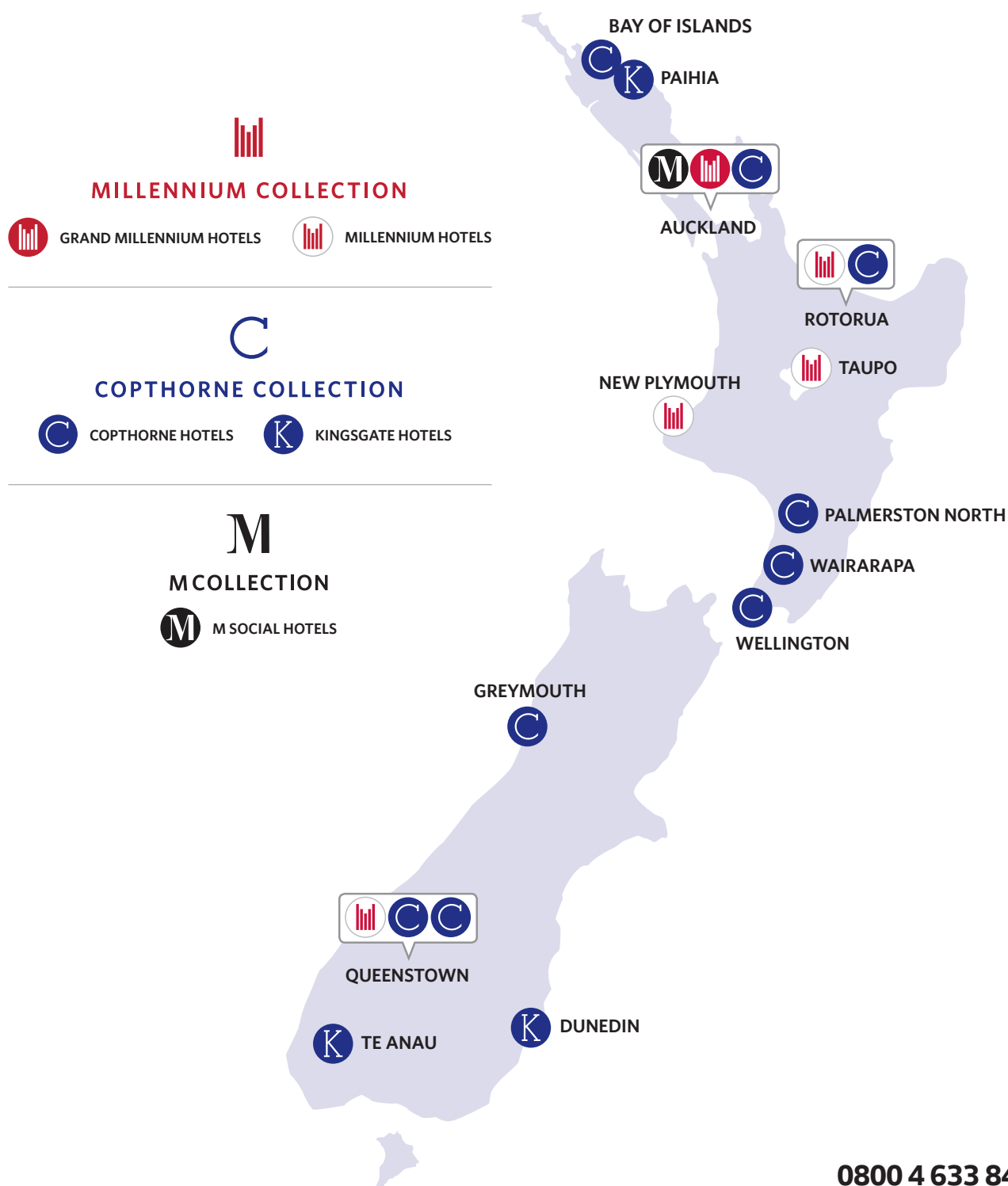
www.meetingsnz.co.nz



2023 Millennium Hotel Manuels, Taupō

Let's Meet *Together*

Our Locations



0800 4 633 846

W meetingsnz.co.nz | millenniumhotels.com

New Zealand +64 3 367 3302 | E meetings@millenniumhotels.co.nz