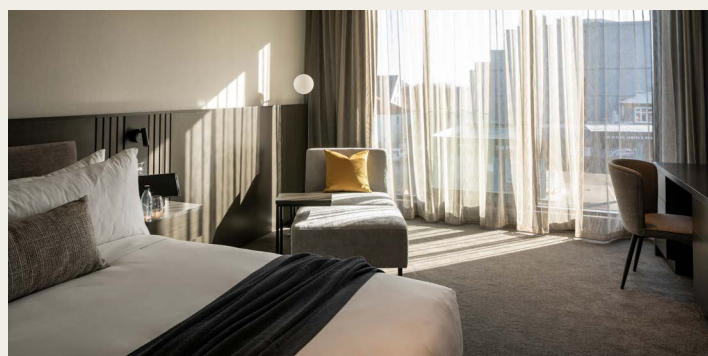
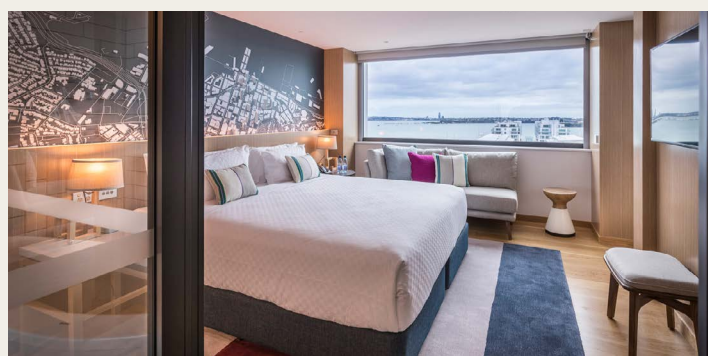


Premium & Lifestyle



Grand Millennium Auckland

4.5 ★

- Located in Auckland's CBD, near many of the city's famous venues, including the Sky Tower and the NZICC (New Zealand International Convention Centre)
- 453 guest rooms, including 14 luxurious suites, all with stunning city and urban views
- 5 dining establishments including world-class Japanese cuisine at Katsura Restaurant
- Spacious club rooms with access to an exclusive Millennium Club lounge on the 12th floor
- 14 function spaces seating up to 800 theatre style
- Heated indoor pool and well-equipped gymnasium

M Social Auckland

4.5 ★

- Superbly located right on the Auckland waterfront, overlooking Princes Wharf, M Social is in the heart of entertainment with an array of dining, entertainment & shopping experiences nearby
- 190 contemporary rooms, including 8 suite, all share spectacular wall to wall views of the harbour
- Beast & Butterflies restaurant & bar, a casual all-day dining destination complete with an outdoor terrace and a menu that features exotic flavours from the pacific rim, including dishes that showcase the region's best fresh seafood
- 2 meeting rooms with a capacity of up to 30 - 40 people and 4 boardrooms with a full range of refreshments and snacks charged upon consumption

The Mayfair Christchurch

5 ★

- A premium boutique hotel, centrally located on the corner of Victoria and Dorset streets
- Featuring 67 rooms over 5 stories, including 8 Mayfair Suites
- 2 Conference spaces, ideal for groups of up to 40 people
- Majestic at Mayfair offers à la carte all day brunch, high tea and a premium cocktail bar experience
- Seamless 24/7 check-in
- Self-park and valet car parking
- Energy-efficient systems, waste reduction programs, and sustainable operations for a greener stay

Millennium Hotel Rotorua

4.5 ★

- Located next to the world-famous Polynesian Spa
- Adjacent to Lake Rotorua and within one block of the city centre
- 228 guest rooms, including 2 spacious suites
- 8 function rooms seating up to 350 theatre style
- On-site large indoor heated swimming pool and fitness centre
- Executive Club Floor and Lounge
- In-house day spa for beauty and massage
- Lockable mountain bike storages

Millennium Hotel Queenstown

4.5 ★

- Located only 3 minutes walk from downtown Queenstown
- 220 guest rooms, including 15 suites, all with mountain & garden/courtyard view rooms
- All rooms and public areas completely refurbished
- Queenstown's largest pillarless Ballroom seating up to 600 theatre style
- Secure on-site car parking

Millennium Hotel & Resort Manuels Taupo

4.5 ★

- A Mediterranean-style hotel, situated on the shores of Lake Taupo with fantastic views of the lake and mountains
- 39 Boutique guest rooms, 12 luxurious suites
- 3 Stylish event venues seating up to a 120 guests
- Heated swimming pool, private grotto plunge pool, sauna and gym
- Minutes away from famous attractions such as Huka Falls, water and snow skiing and golf courses
- Edgewater Restaurant is a superb choice for casual dining
- Located conveniently 8 minutes from Taupo Airport

Millennium Hotel New Plymouth Waterfront

4.5 ★

- Located in the heart of the CBD with panoramic views of the Tasman Sea
- Walk to world famous Pukekura Park featuring the Bowl of Brooklands and Festival of the Lights
- 42 guest rooms, including 2 suites
- Award- winning Salt Restaurant and Bar, Salt is a local favourite offering sea views from every table



Copthorne Hotel & Resort Bay of Islands

4 ★

- A superbly located waterfront location in New Zealand's historical Waitangi National Trust Reserve
- 180 guest rooms, including 4 suites, all of which have balcony or outside decking with water or garden views
- Spectacular freeform rock swimming pool, spa pool and tennis court
- 7 versatile function rooms seating up to 400 theatre style

Copthorne Hotel Auckland City

4 ★

- Centrally located within easy walking distance of Britomart shopping, Auckland's CBD and Spark Arena
- 106 guest rooms including 4 suites
- All rooms have private balconies, with a harbour or city view
- On-site car parking

Copthorne Hotel Rotorua

4 ★

- Close to the CBD, nightlife, and restaurants with geothermal activity just minutes away
- 58 superior guest rooms including 1 suite
- 5 function rooms seating up to 340 guests
- Tennis court and heated swimming pool

Copthorne Hotel Palmerston North

4 ★

- Ideal for explorers and business travellers alike
- 76 guest rooms including 4 junior suites and 3 family suites
- 4 function rooms seating up to 150 guests
- Free parking on-site parking

Copthorne Hotel & Resort**Solway Park Wairarapa**

4 ★

- Set in 24 acres of landscaped parklands, native bush and fragrant gardens on the outskirts of Masterton
- 102 guest rooms including 3 executive suites and 8 apartments
- 6 function rooms seating up to 500 guests
- Heated indoor and an outdoor pool, a spa pool, a fitness centre, tennis and squash courts

Copthorne Hotel Wellington Oriental Bay

4 ★

- Stunning 180° views over the Wellington Harbour
- 10 minute walk to city shopping, theatres, Te Papa Museum and Tākina Convention Centre
- 118 guest rooms including 4 suites and 1 apartment, all with city or harbour views
- 3 function rooms seating up to 110 guests
- One80° Restaurant and Bar is home to award-winning Executive Chef, Chetan Pangam

Copthorne Hotel & Resort**Queenstown Lakefront**

4 ★

- 241 guest rooms, 77 of these boasting superior lake views and including 6 lakeview suites
- Lake & mountain views from bar & restaurant
- 3 function spaces seating up to 200 guests
- 3 minute walk to the centre of Queenstown
- Secure on-site car parking

Copthorne Hotel & Apartments**Queenstown Lakeview**

4 ★

- Stunning views of Lake Wakatipu and the spectacular Cecil Peak from every room
- 66 guest rooms and 19 fully self-contained 2-bedroom apartments that offer extra space and the comfort of a private lounge, full-service kitchen and 2 bathrooms
- 5 minute walk to town to enjoy Queenstown's nightlife and restaurants

Copthorne Hotel Greymouth

4 ★

- Located in the centre of town, overlooking the Grey River
- 55 guest rooms with city or water views
- Jimmy Cook Kiwi Kitchen restaurant offers breakfast & dinner
- Free on-site parking

Kingsgate Hotel Autolodge Paihia

3.5 ★

- 100 metres from Paihia wharf and township
- 113 guest rooms including 13 suites
- Stunning harbour views looking out to Russell from restaurant and bar
- Perfect for self-drive travellers with complimentary car parking

Kingsgate Hotel Dunedin

3.5 ★

- Surrounded by beautiful hills and coastline abundant with wildlife
- Situated minutes from the Octagon and within strolling distance of stately homes, Gothic revival style buildings and the CBD
- 55 guest rooms, including 10 suites, all have north facing private balconies overlooking the heart of Dunedin City
- Complimentary on-site car parking

Kingsgate Hotel Te Anau

3.5 ★

- Set amongst gardens on the tranquil shores of Lake Te Anau
- 69 modest guest rooms
- Personalised southern hospitality and impressive lake and mountain views
- 2 hour drive from Queenstown and 2.5 hour drive to Milford Sound, unofficially the 8th wonder of the world



Learn how your support contributes

To the Save the Kiwi initiative and our
Millennium Green Path Sustainability Program

Save
the **kiwi**

 **MILLENNIUM'S**
GREEN PATH